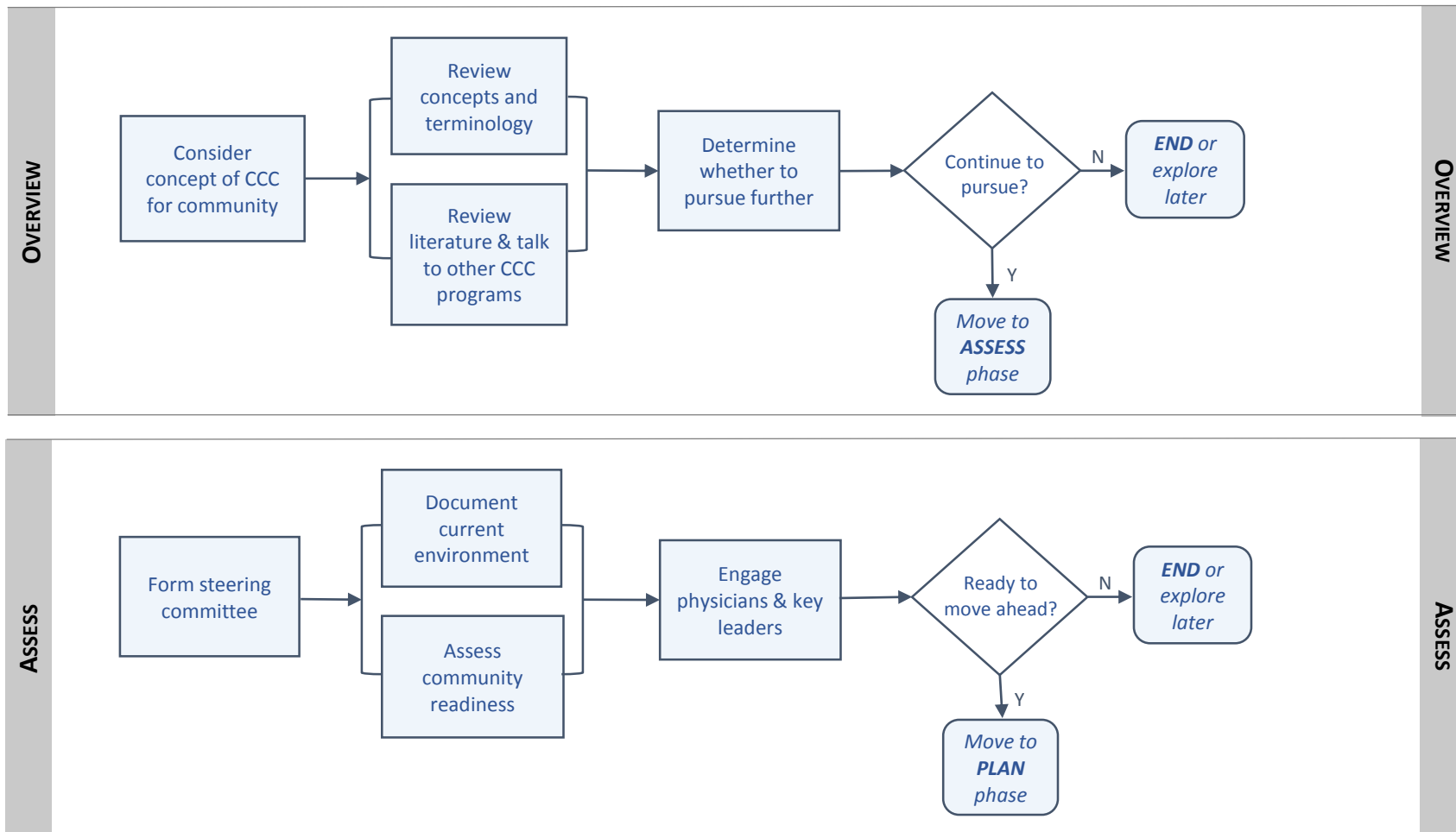
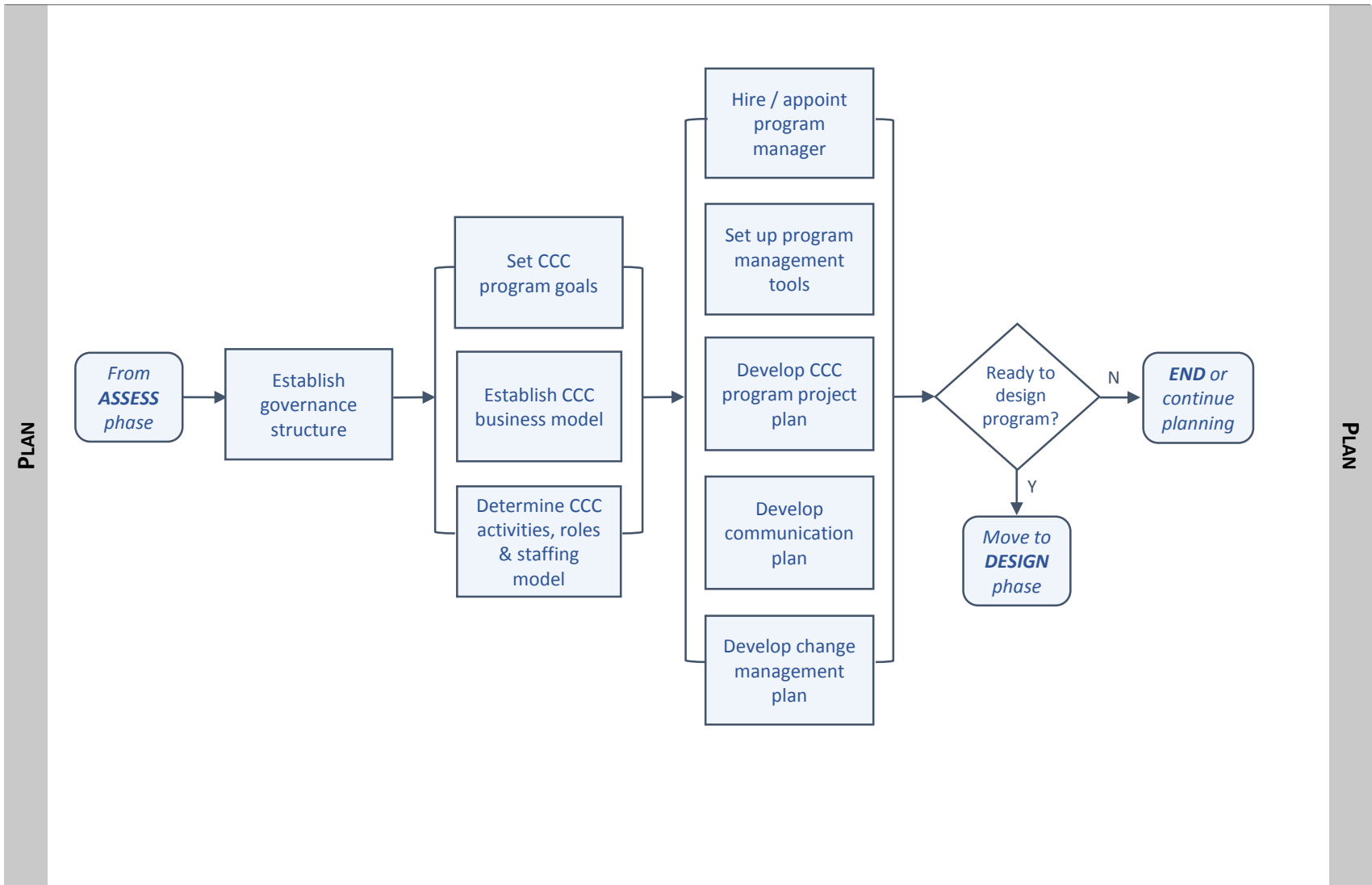


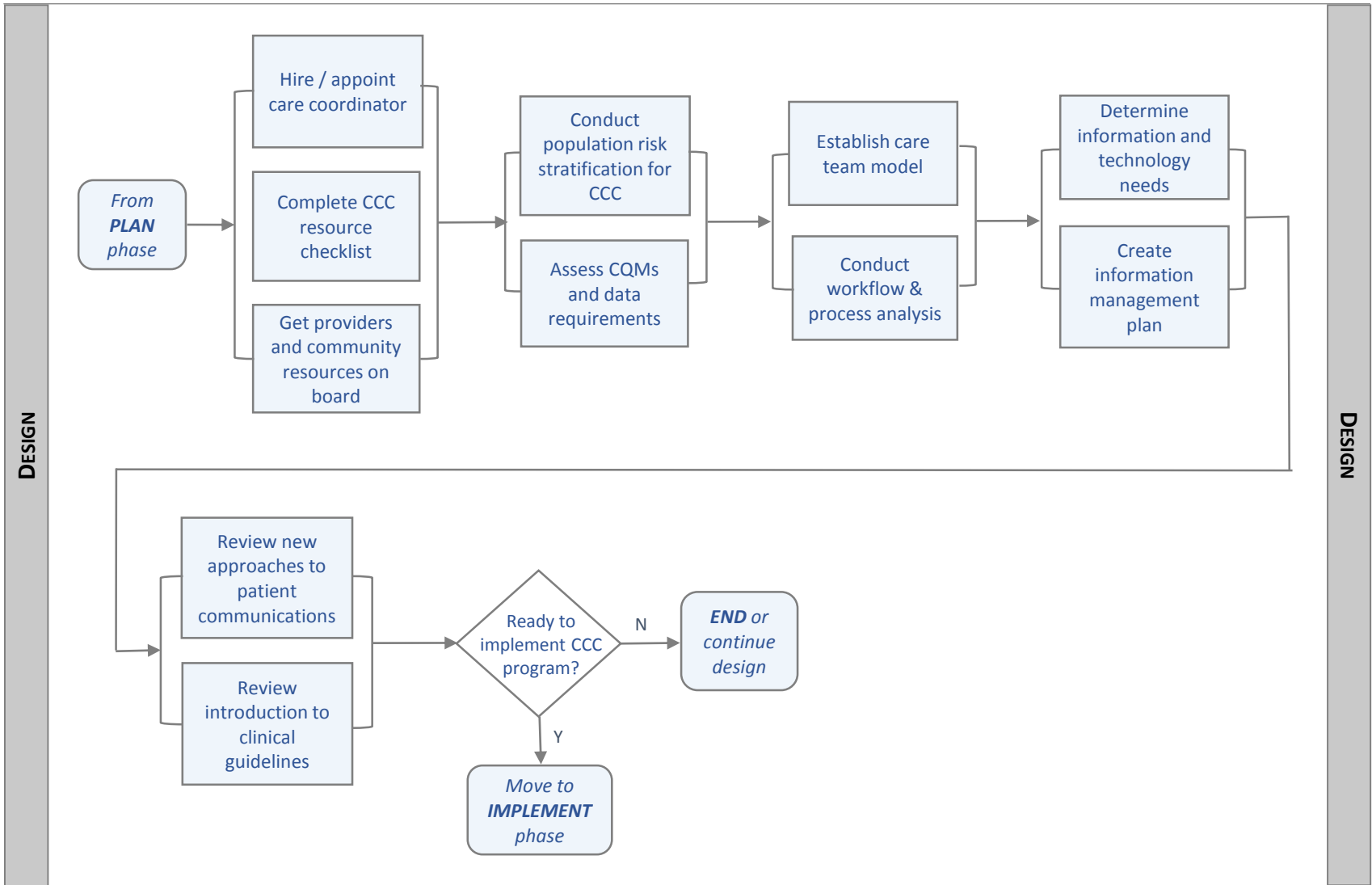
Section 0.3 Overview

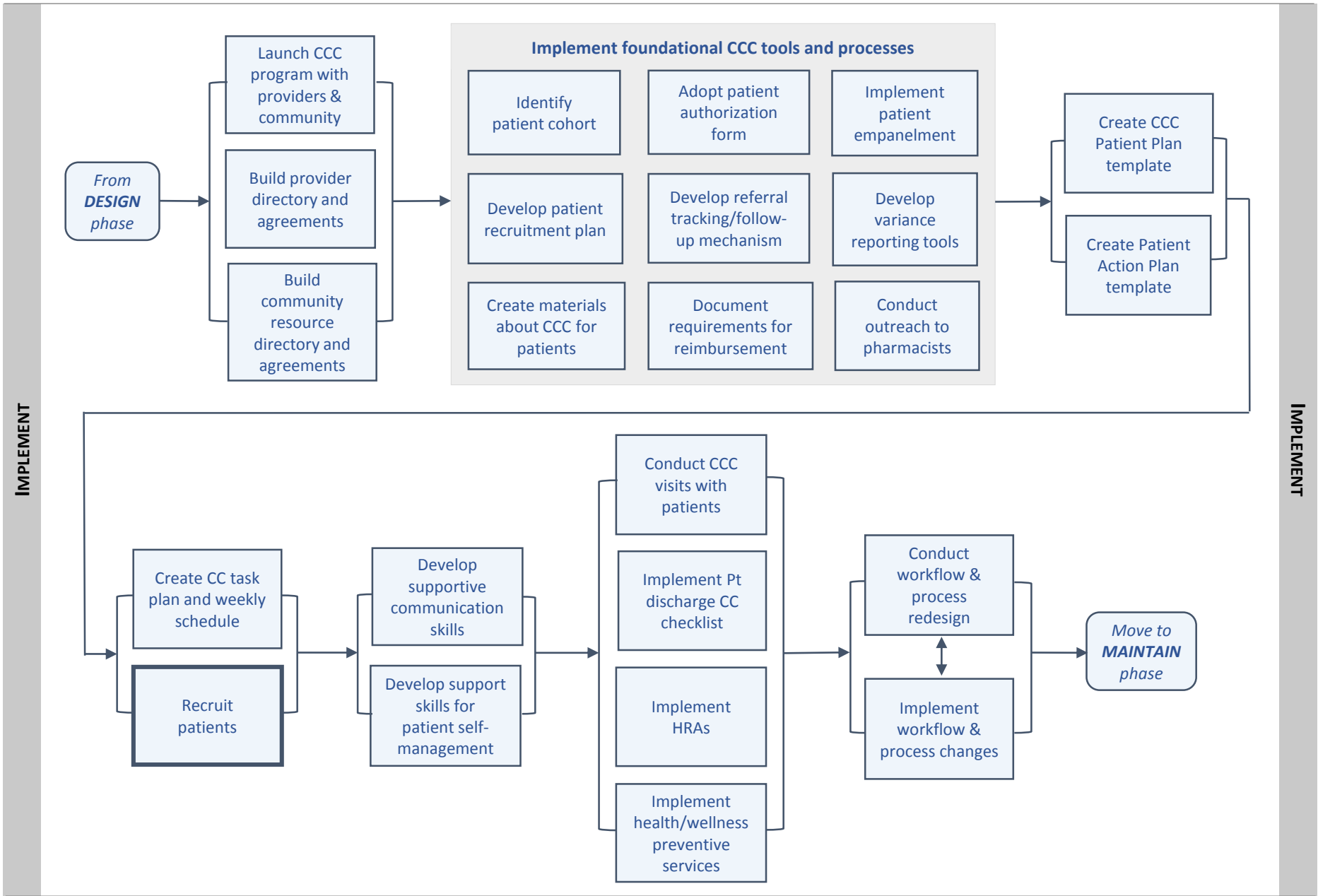
CCC Program Workflow Diagram

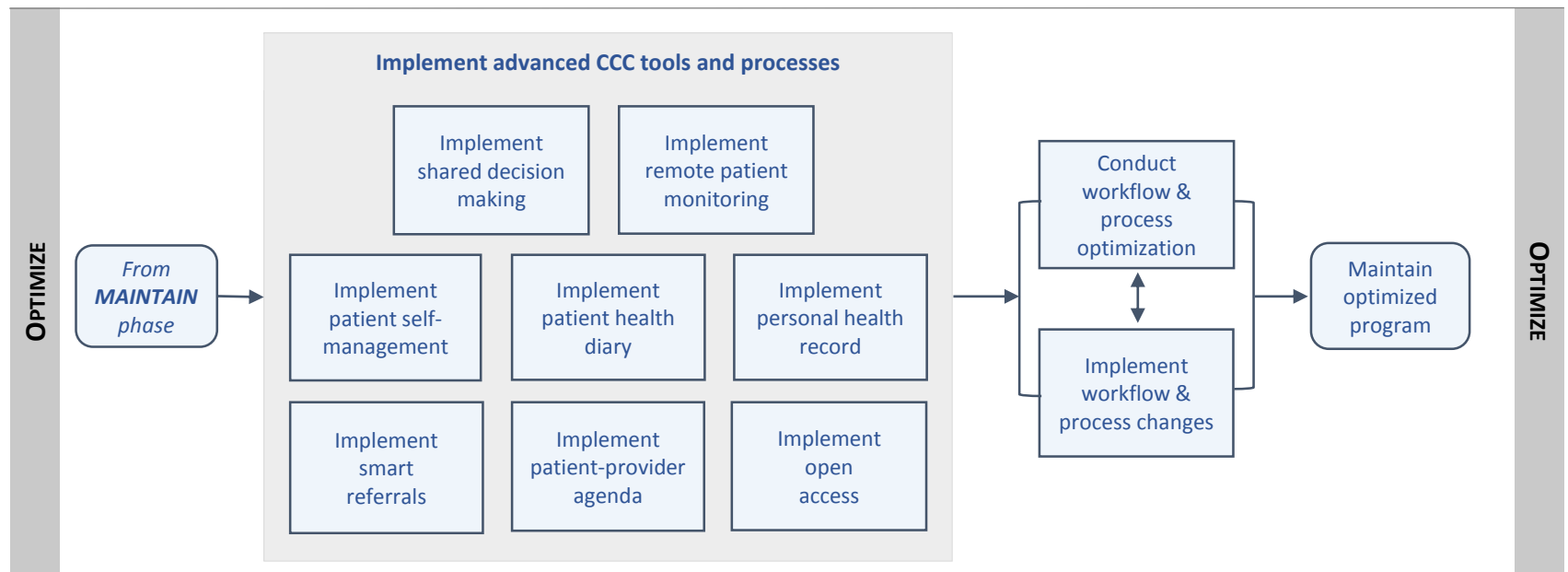
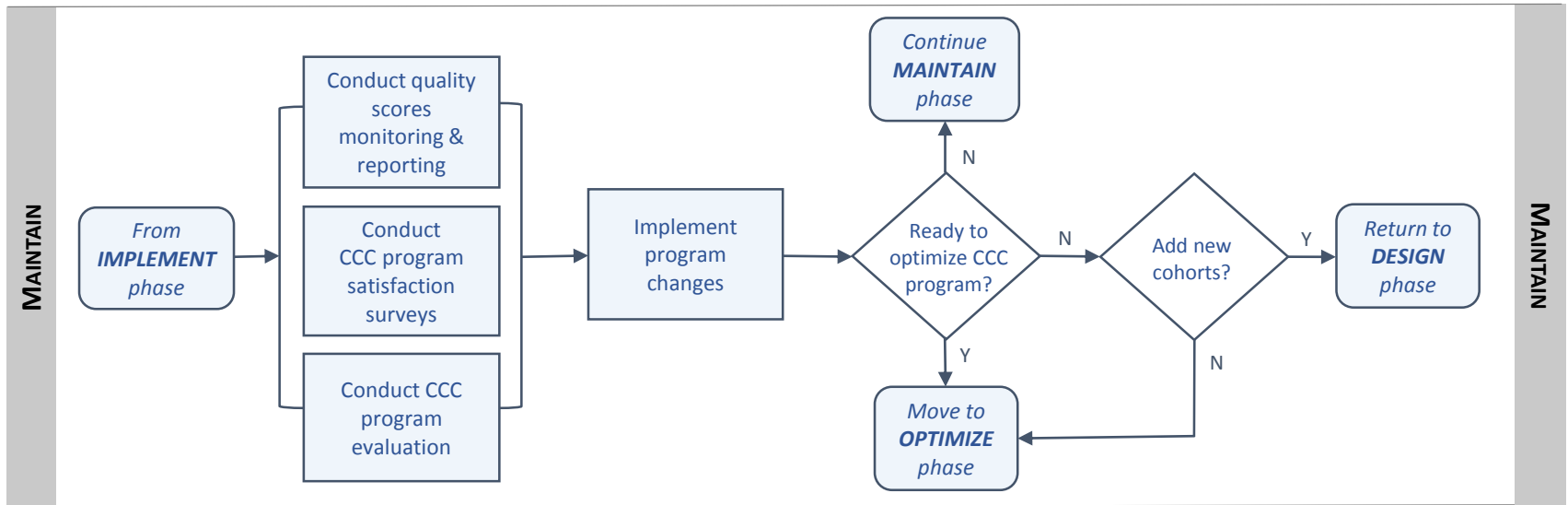
This diagram outlines the general workflow that a community would likely follow to develop a Community-Based Care Coordination (CCC) program. Related processes are grouped into logical and sequential broad phases: OVERVIEW; ASSESS; PLAN; DESIGN; IMPLEMENT; MAINTAIN; and OPTIMIZE. Most processes are supported by one or more tools in the CCC Toolkit.











Copyright © 2014 Stratis Health and KHA REACH.

Updated 12/18/2014

Produced under contract with The Office of the National Coordinator for Health Information Technology (ONC)

For support using the toolkit

Stratis Health • Health Information Technology Services

952-854-3306 • info@stratishealth.org

www.stratishealth.org

