

# Improving Access to Palliative Care in Rural Communities



## Why Is Rural Palliative Care Vital?

- People in rural communities often enjoy the benefit of long-standing social networks, but tend to be older, sicker, and poorer than in urban areas without ready access to high-quality, patient-centered, coordinated care and support.
- Palliative care helps individuals, families, clinicians, and communities who are dealing with serious illness by preventing and relieving stress and suffering.
- “Whole person” palliative care not only relieves suffering by identifying, assessing, and treating pain, but also addresses other physical, psychosocial, and spiritual needs.
- Ensuring that patients with serious illness receive care that is consistent with their goals and values is a critical component of high-quality care that results in peace of mind and lower costs.

## Why Stratis Health?

- The Stratis Health team is comprised of multi-faceted experts who have specialized since 2008 in helping rural communities build and sustain successful palliative care programs.
- Our agile staff delivers data-driven insights, evidence-based interventions, and leading-edge improvement methodologies that inspire organizations and communities to discover and implement solutions to persistent challenges associated with treating advanced and complex illness.
- We have deep expertise in working with vulnerable and underserved populations including rural, marginalized, and low-income populations.
- Stratis Health is uniquely qualified to help rural communities increase access to high-quality, patient-centered, coordinated care and support.

## Stratis Health's Impact

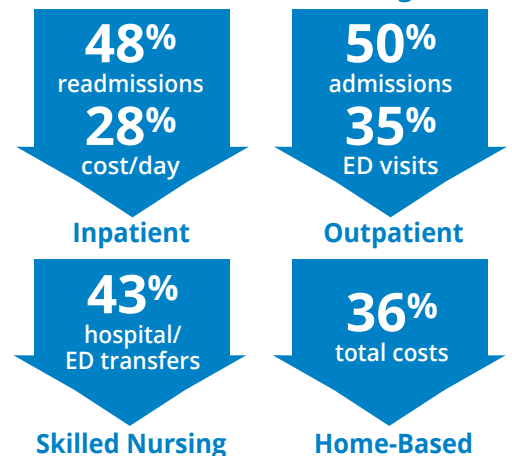
Supported developments of community-based palliative care services:

- Helped community teams improve levels of experience or expertise in a variety of core palliative care clinical and operational processes.
- Decreased unnecessary health care utilization, including emergency department visits and hospital stays.
- Improved symptom management for patients.
- Achieved high patient satisfaction ratings by ensuring support that honors stated goals.

## Resources

- [Structured process for development/implementation \(facilitated planning and networking support\)](#)
- [Toolkit](#)
- [Sustainability strategies](#)
- Data collection tools

### Palliative Care Reduces Avoidable Spending and Utilization In All Settings

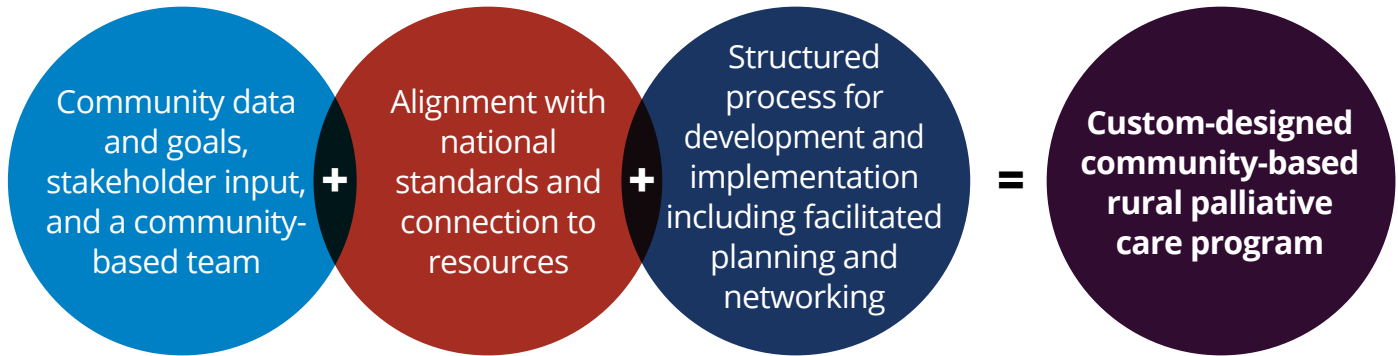


View the Stratis Health Rural Palliative Care Approach on Page 2

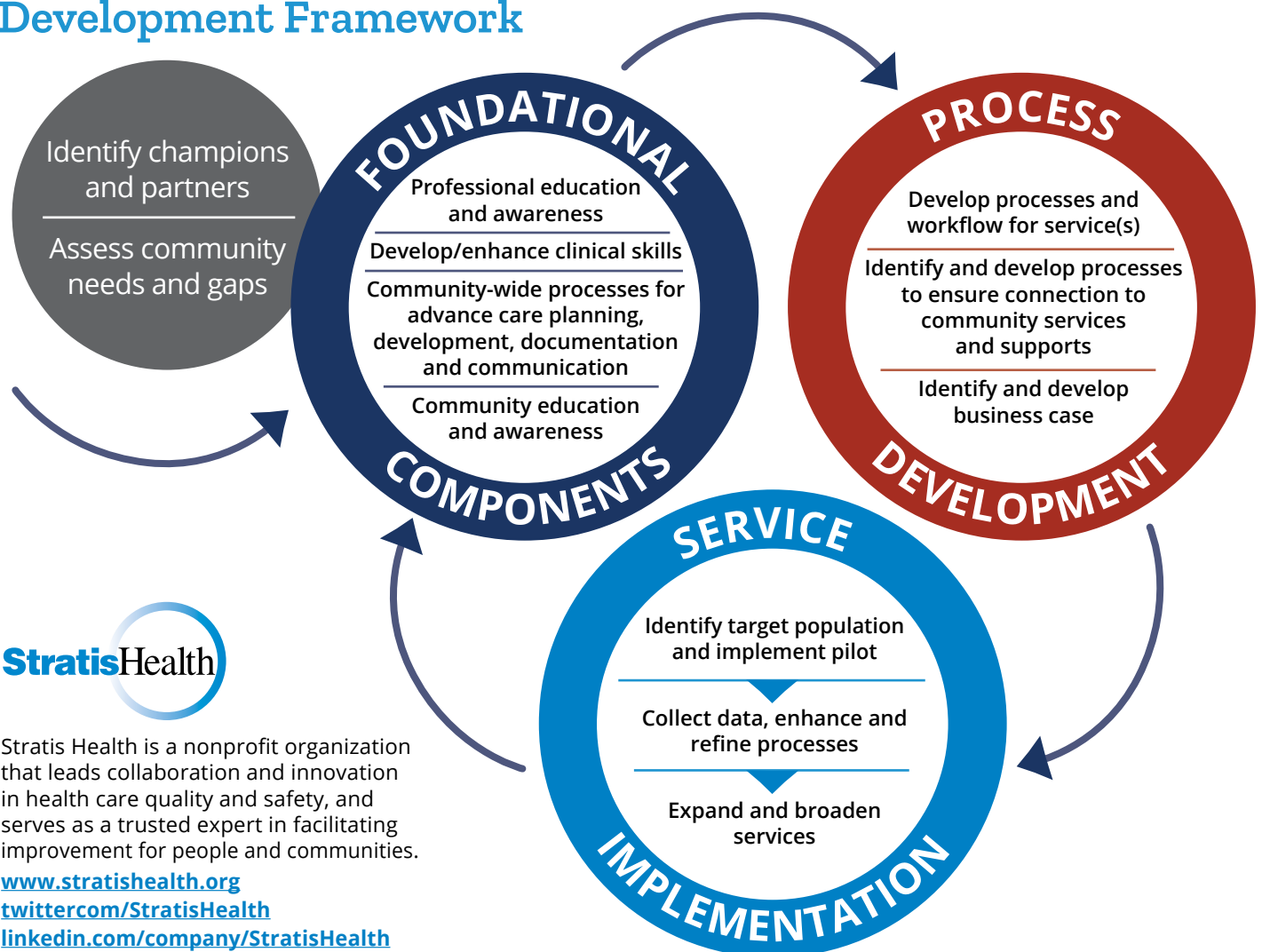
Source: Center to Advance Palliative Care, 2019

# Rural Palliative Care

## The Stratis Health "Formula for Program Development"



## Rural Community-Based Palliative Care Service Development Framework



Stratis Health is a nonprofit organization that leads collaboration and innovation in health care quality and safety, and serves as a trusted expert in facilitating improvement for people and communities.

[www.stratishealth.org](http://www.stratishealth.org)  
[twitter.com/StratisHealth](https://twitter.com/StratisHealth)  
[linkedin.com/company/StratisHealth](https://linkedin.com/company/StratisHealth)

Stratis Health 2901 Metro Drive,  
 Suite 400, Bloomington, MN 55425  
 Phone 952-896-5186

Contact Karla Weng to learn more: [kweng@stratishealth.org](mailto:kweng@stratishealth.org)