

# Quality Improvement Basics

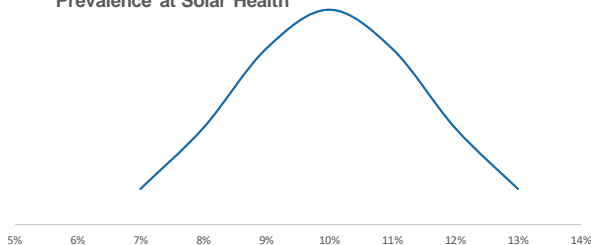
## Data Analysis Example

StratisHealth

0

## Describing Data: Summary Stats

Distribution of Monthly Cancer Prevalence at Solar Health



- **Mean:** 10% was the average cancer prevalence rate
- **Median\*:** 9% was the middle value for cancer prevalence rate
- **Mode:** 9% was the most frequently reported cancer prevalence rate
- **Range:** [7%,13%] - Rates ranged from the lowest at 7% up to the highest at 13%

\*The median will usually approximate the mean unless you have significant outliers or an abnormal distribution.

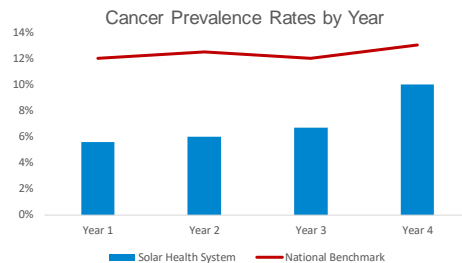
Solar Health System – Current Year	
Month	Cancer Prevalence Rate
Jan	10%
Feb	11%
Mar	8%
Apr	12%
May	9%
June	9%
July	8%
Aug	9%
Sep	11%
Oct	13%
Nov	7%
Dec	9%

1

StratisHealth

1

# Diagnostic Analysis: Identifying Trends and Anomalies



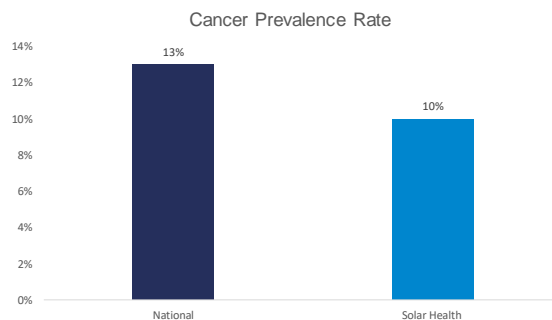
- Trends and Comparisons
  - Cancer prevalence is increasing over time for both national rates and Solar Health rates
  - Prevalence at Solar Health is consistently lower than the national rate
- Anomalies
  - Cancer rates at Solar Health in Year 4 increased substantially from the previous years

2



2

# Diagnostic Analysis: Stratification



10% of Solar Health's 70,000 patients across two hospitals and three clinics have been diagnosed with breast cancer. This is a little bit lower than the national average and is within a standard range, so it doesn't cause much alarm to leadership or community members. However...

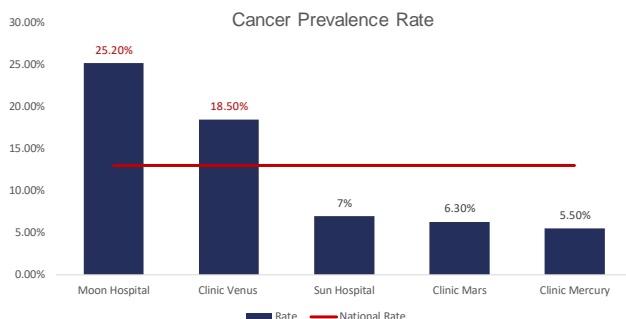
3



3



## Diagnostic Analysis: Stratification



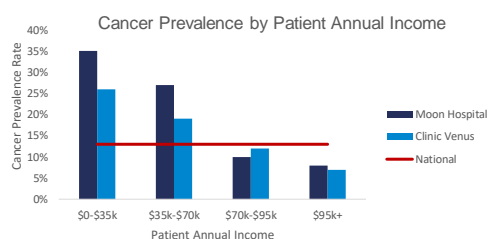
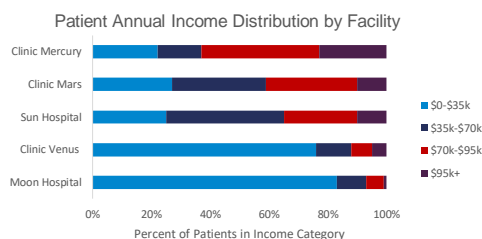
- Stratifying by facility, we can see that Moon Hospital and Clinic Venus have much higher rates of cancer prevalence that were masked by the other facilities' lower rates.
- What interactions could be happening that could cause these stark differences in rates?

4



4

## Diagnostic Analysis: Identify Relationships



- When we stratify by the distribution of patient income at each facility, we can see that Clinic Venus and Moon Hospital have a much larger low-income patient population than the other sites.
- By stratifying even further at just Moon Hospital and Clinic Venus, we can see that cancer rates are much higher for low-income patients than the rates for patients with an annual income over \$70k.
- There seems to be a correlated relationship between patient income and cancer prevalence rates.

5



5



## Summary

- Summary statistics help us understand the dataset's characteristics, size, and variables. The mean, median, mode, and range give a high-level overview of the data.
- Plot data over time to spot trends, patterns, and anomalies.
- Purposeful stratification compares outcomes across strata to uncover disparities or trends.

**Stratis Health is a nonprofit organization that leads collaboration and innovation in health care quality and safety and serves as a trusted expert in facilitating improvement for people and communities.**

This project is supported by the Health Resources and Services Administration (HRSA) of the U.S. Department of Health and Human Services (HHS) as part of an award totaling \$740,000 with 0% financed with non-governmental sources. The contents are those of the author(s) and do not necessarily represent the official view of, nor an endorsement, by HRSA, HHS or the U.S. Government. (June 2023)