

Stratis Health: Leading Transformation

What we do

Stratis Health is a nonprofit organization with a mission to collaborate and innovate to improve health. We work nationwide and across the continuum of care, including for:

- Health systems, hospitals, clinics, nursing homes, and home and community-based services.
- Payers such as health plans, accountable care organizations (ACOs), and employers.
- Public health and community-based organizations.

Core to Our Every Decision



Improving Rural Health

We advance value-based care in rural communities by improving quality and patient safety, advancing health equity, facilitating care coordination, and building community capacity to address serious illness care, substance use disorder, and other health related needs.



Quality Improvement

More than 1,350 critical access hospitals have been supported through 45 State Flex Programs to increase quality data reporting and drive improvement.

Provide technical assistance to Medicare-certified Indian Health Service-managed hospitals to reduce opioid-related mortality, improve quality, patient safety, and transitions of care among the American Indian/Alaska Native community.



Health Equity

Our online learning and resource center, Culture Care Connection, is geared towards providing actionable tools to help health care professionals recognize their implicit bias and increase cultural sensitivity to address health-related social needs.

Supporting rural hospitals and clinics to develop and strengthen efforts to improve health equity and address health disparities.

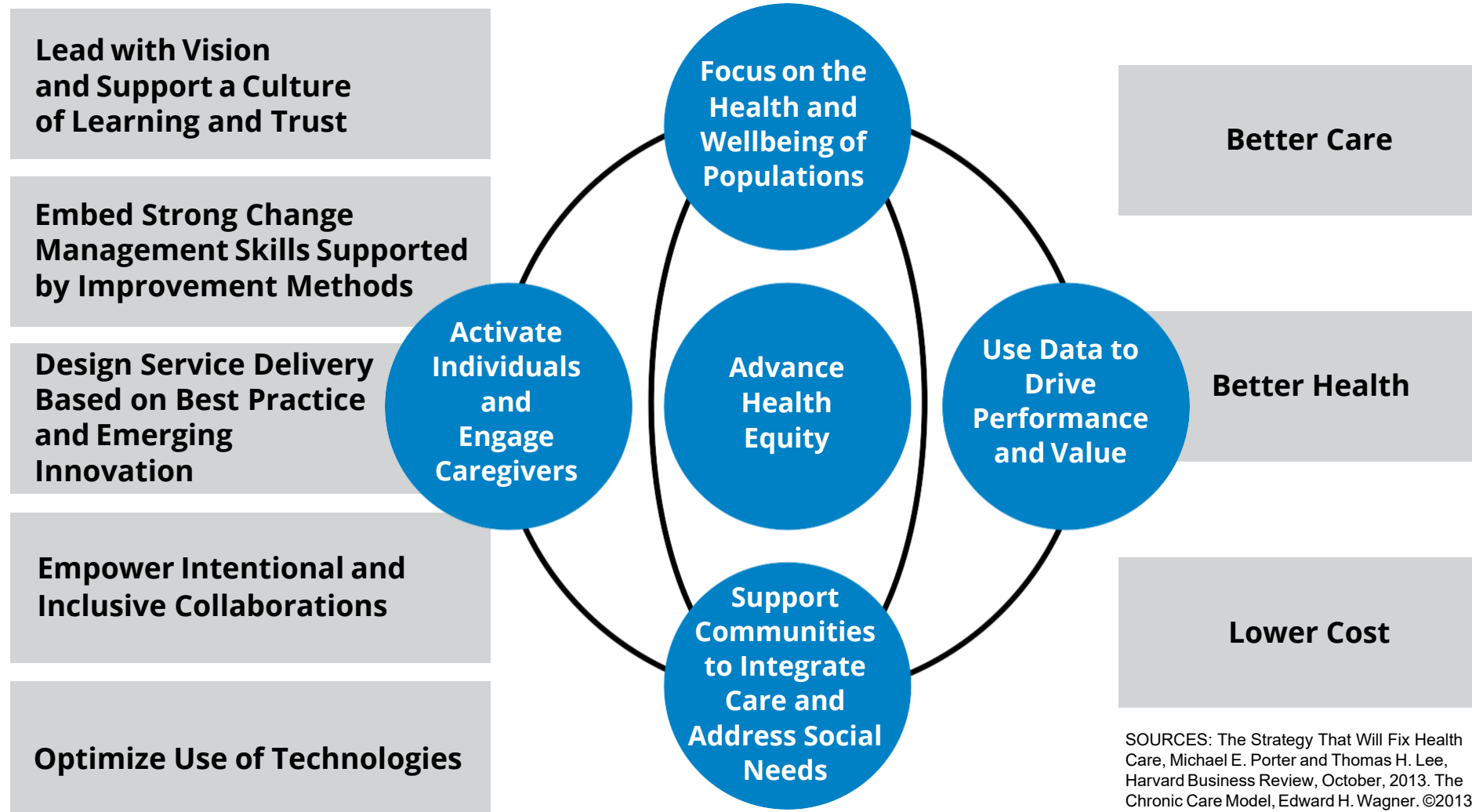


Community Solutions

Worked with more than 45 rural communities across six states to support development of community-based palliative care services.

Create broad base of relationships between the health care and nonprofit community-based organization partners to implement a model and workflows for screening and referrals to address health related social needs.

Implement Project ECHO initiatives focused on addressing opioid use disorder (OUD) targeted towards rural and tribal communities, and help county jails incorporate medication for OUD into correctional health.



SOURCES: The Strategy That Will Fix Health Care, Michael E. Porter and Thomas H. Lee, Harvard Business Review, October, 2013. The Chronic Care Model, Edward H. Wagner. ©2013 Stratis Health Rev. Sept. 2023



For more than five decades, Stratis Health has been intensely focused on customer needs to enable rapid development and deployment of services and solutions that strengthen organizational capacity, redesign care delivery, and build community capacity.

The How

Stratis Health's Innovation and Influence Transform the Market

Strengthening Organizational Capacity

We help build your organizational critical infrastructure to deliver valued services for your patients and community.

Areas of expertise

- **Data Analytics** – Managing data to improve care and advance population health.
- **Health IT** – Leveraging technology to deliver quality efficient, coordinated care.
- **Measurement and Reporting** – Prioritizing measures and aligning reporting requirements to optimize quality improvement.
- **Organizational Culture** – Supporting organization-wide continuous improvement.
- **Payment Models** – Meeting quality-related requirements and thriving in an ever-changing payment environment.
- **Quality Improvement and Patient Safety** – Using evidence and emerging models to continuously enhance care.

Redesigning Care Delivery

We help you conceive and design health care delivery in ways that not only result in better outcomes, but in improved efficiency and value.

Areas of expertise

- **Affordability** – Delivering appropriate care efficiently to achieve the greatest value.
- **Care Coordination** – Systematically organizing patient care activities and share information among everyone concerned with a patient's care.
- **Patient and Family Activation** – Engaging patients and families as partners in their care.
- **Population Health Management** – Driving systems improvement to focus on wholistic health, address risks within patient populations, and eliminate health disparities.

Building Bridges Between Health Care and Community

We help you leverage health care and community resources and expand your capacity to deliver high-quality, high-value care and services.

Areas of expertise

- **Community Resource Integration** – Coordinating across all care settings and community support service organizations.
- **Collaboration and Partnerships** – Convening stakeholders to share resources across care settings and in the community.
- **Health Equity** – Ensuring that quality health care is delivered in a fair, inclusive, and just manner to improve the lives of individuals, communities, and populations.
- **Social Determinants of Health** – Facilitating multi-sector solutions to address social needs; and deliver culturally and linguistically appropriate services.

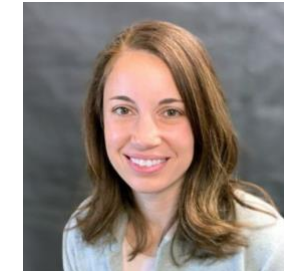
How we help can help you:

Stratis Health is comprised of thought leaders and rural health improvement experts who have been improving rural health for more than 20 years. We can support you in a technical assistance or train-the-trainer approach to:

- Lead cohort-based peer learning opportunities to support implementation of best practices that address challenges and offer solutions specific to rural communities.
- Provide one-on-one technical assistance to enhance the ability of rural health care organizations to build quality infrastructure, improve patient experience, and enhance care coordination.
- Develop capacity among partners and participants by using a collaborative approach to implement and sustain community-based solutions.



Karla Weng
Senior Program Manager
kweng@stratishealth.org
952-853-8570



Sarah Brinkman
Program Manager
sbrinkman@stratishealth.org
952-853-8852

